



CULTURE AS KING

ASA 12.08.21

Richard Browning

CULTURE AS KING

INTRODUCTION

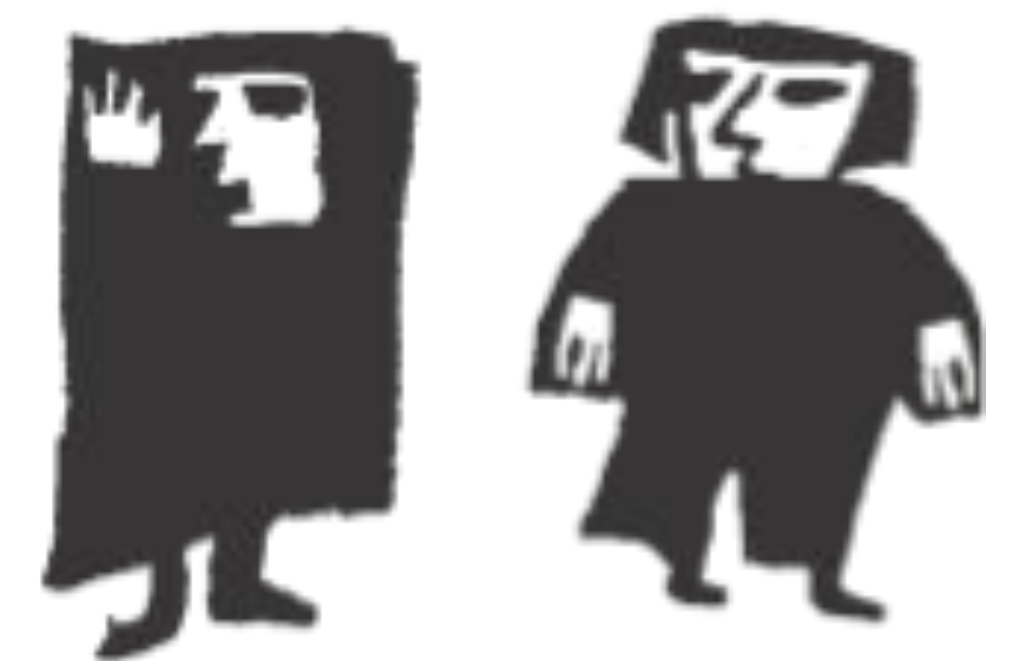
Going Deeper

This Church

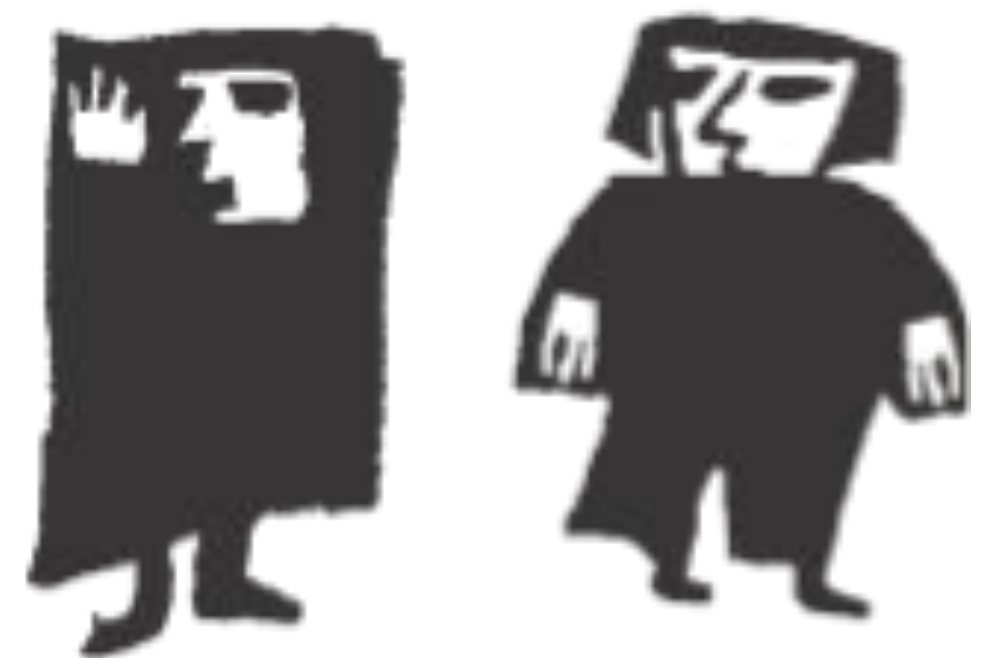
Our Schools

Educating for

Conclusion



“The collective world view of students attending Anglican schools generated an ethos consistent with a predominantly secular host culture”



CULTURE AS KING

Introduction

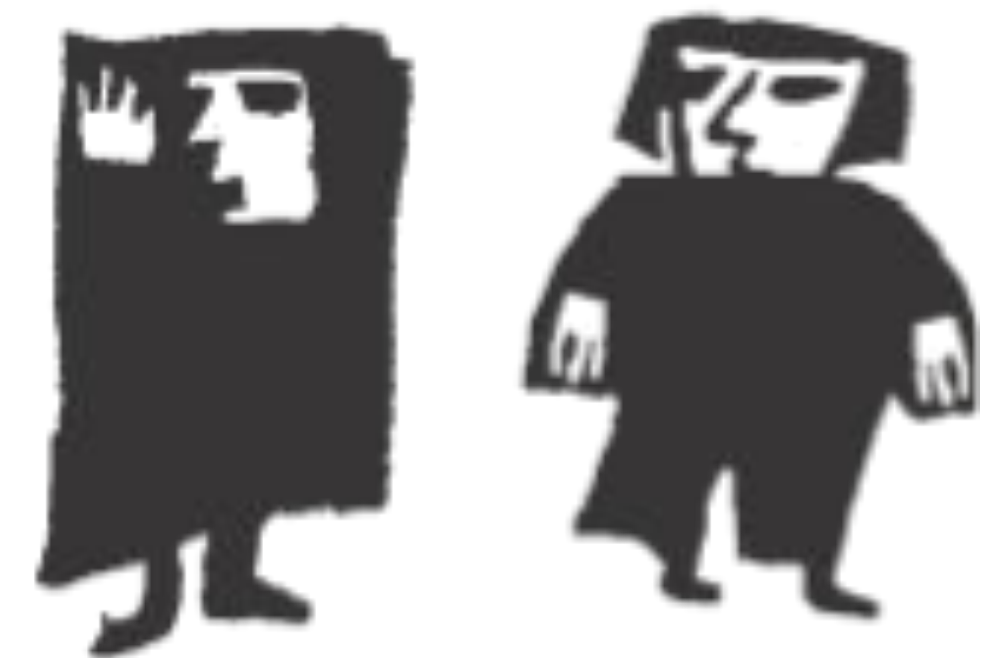
GOING DEEPER

This Church

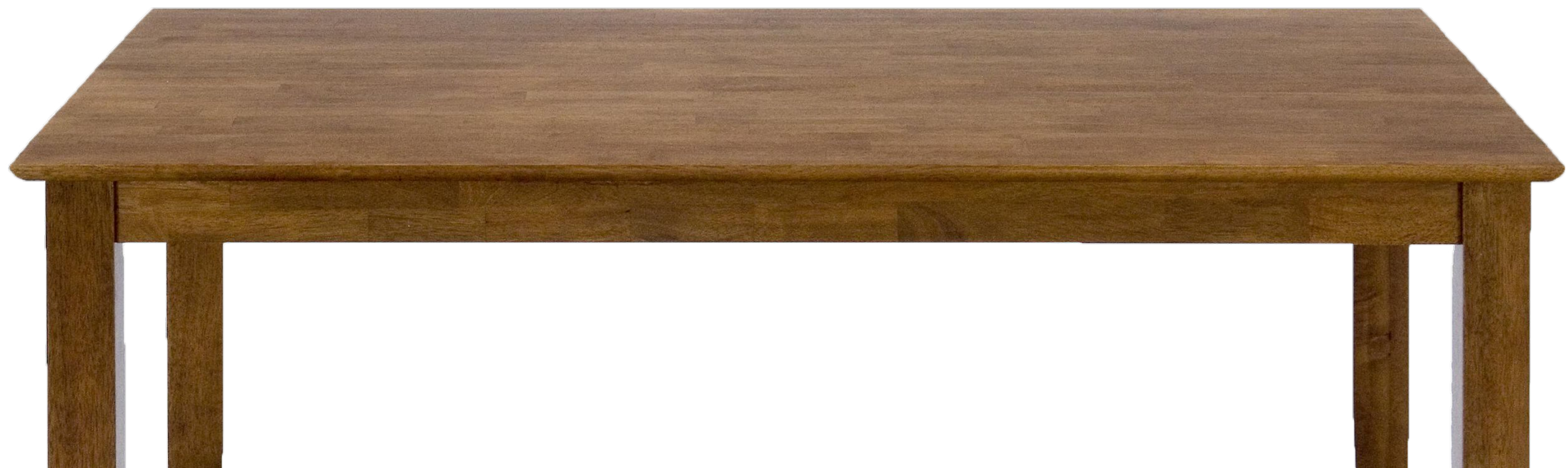
Our Schools

Educating for

Conclusion



1905 - Adolph Von Baeyer
1906 - Henri Moissan
1907 - Albert Abraham Michelson
1908 - Elie Metchnikoff and Paul Ehrlich
1908 - Gabriel Lippmann
1910 - Otto Wallach
1910 - Paul Heyse
1911 - Alfred Fried
1911 - Tobias Michael Carel Asser
1914 - Robert Barany
1915 - Richard Willstaetter
1918 - Fritz Haber
1921 - Albert Einstein
1922 - Niels Bohr
1922 - Otto Meyerhof
1925 - James Franck and Gustav Hertz
1927 - Henri Bergson
1930 - Karl Landsteiner
1931 - Otto Warburg
1936 - Otto Loewi
1943 - George Charles de Hevesy
1943 - Otto Stern



... the more
sitting
in the company
of scholars,
the more wisdom.



What are the essential elements to an intentional culture?



CULTURE AS KING

Introduction

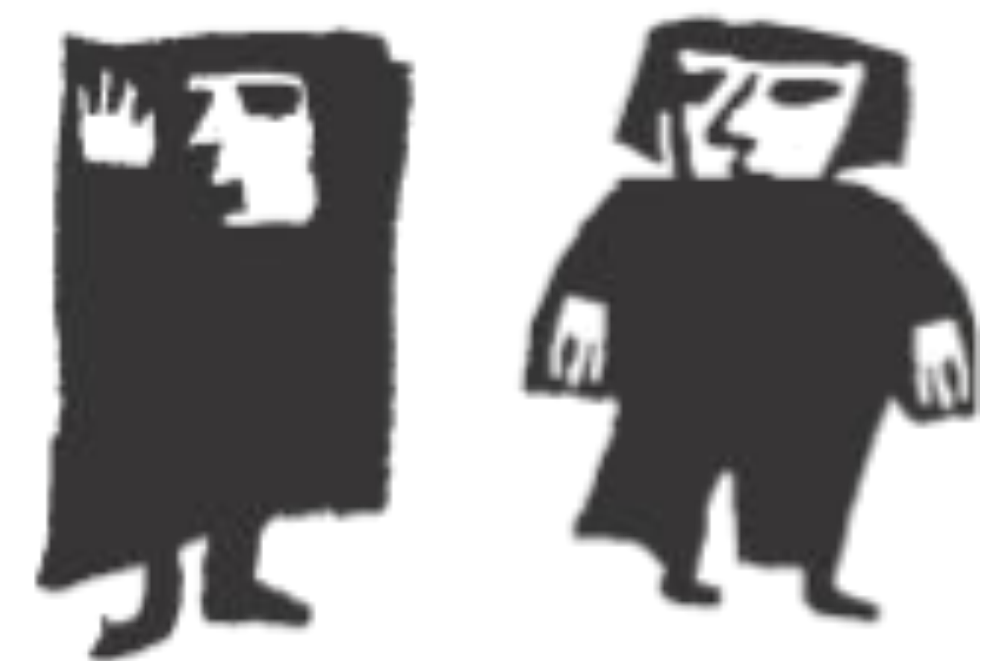
Going Deeper

THIS CHURCH

Our Schools

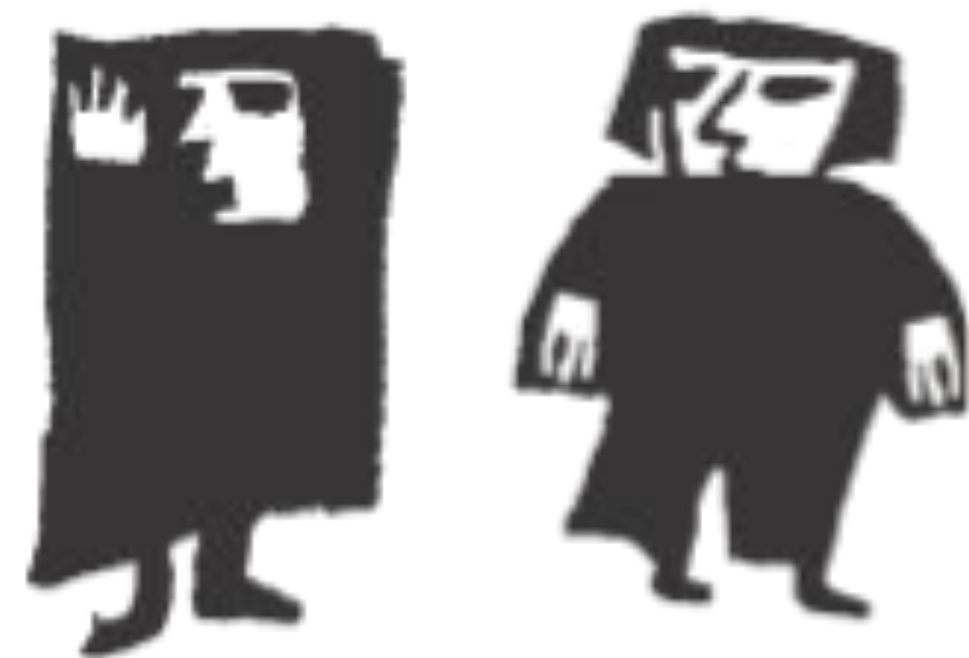
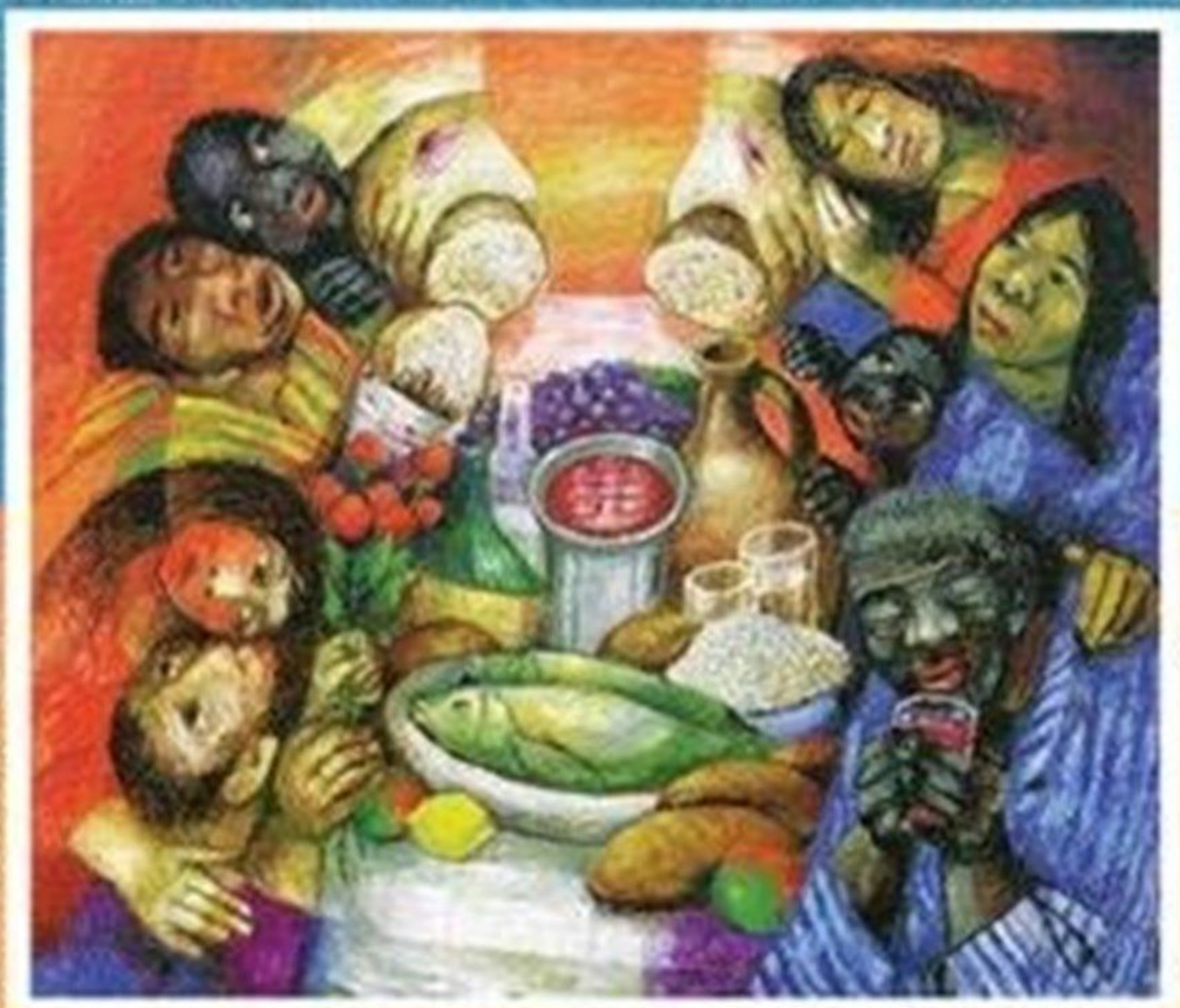
Educating for

Conclusion



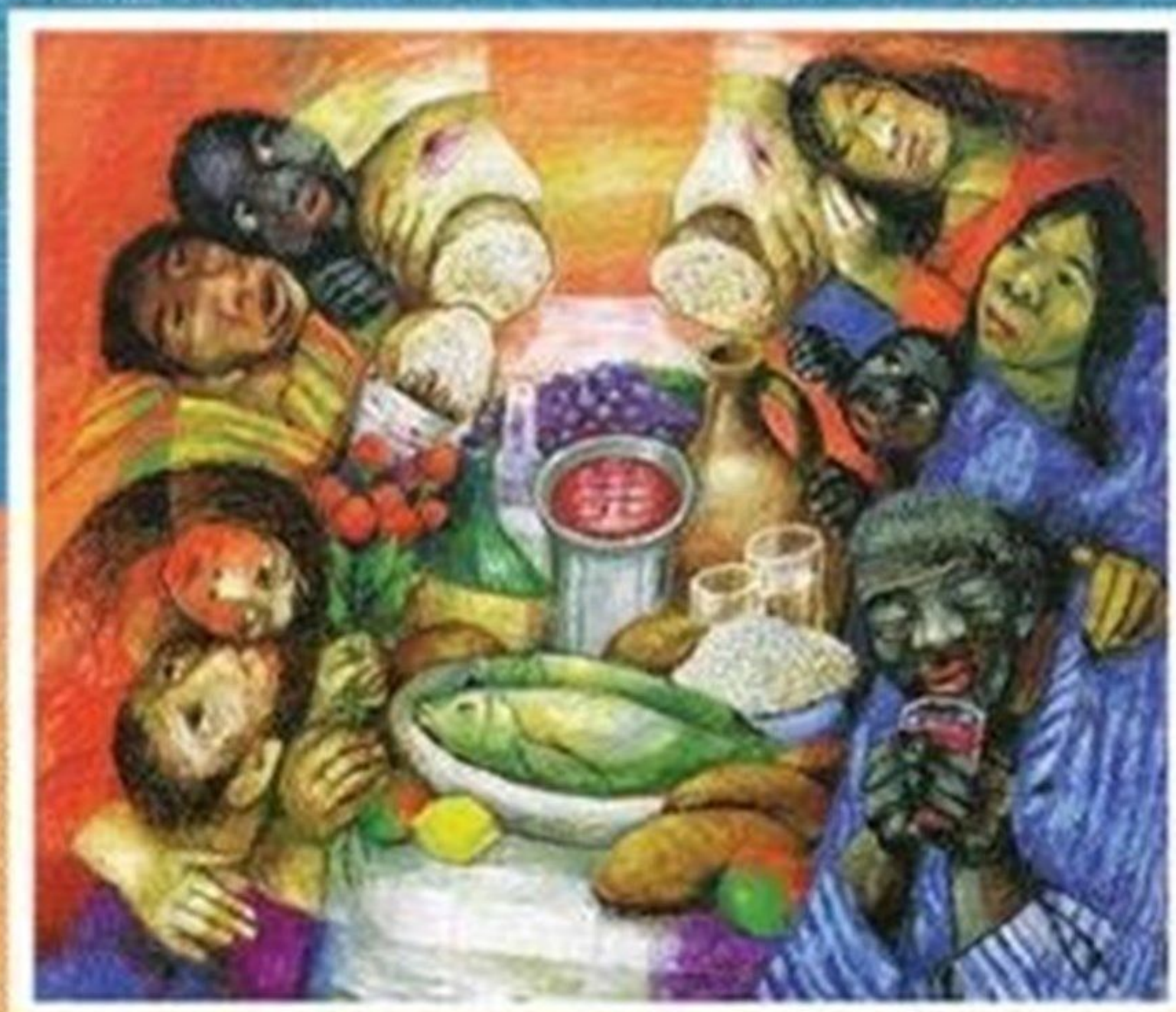
THE HUMBLE CHURCH

RENEWING THE BODY OF CHRIST
MARTYN PERCY

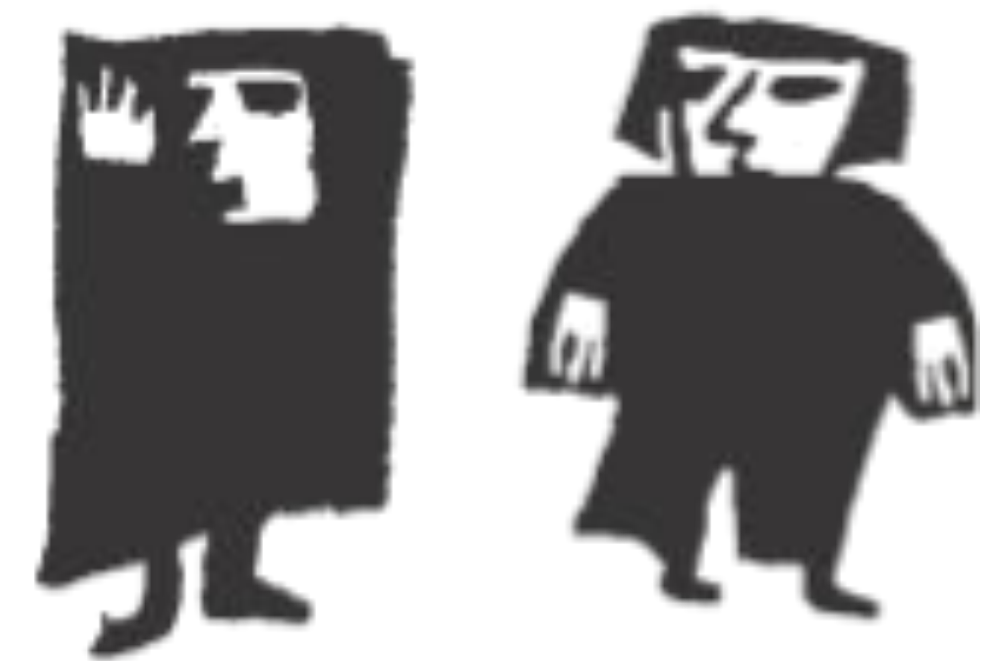


THE HUMBLE CHURCH

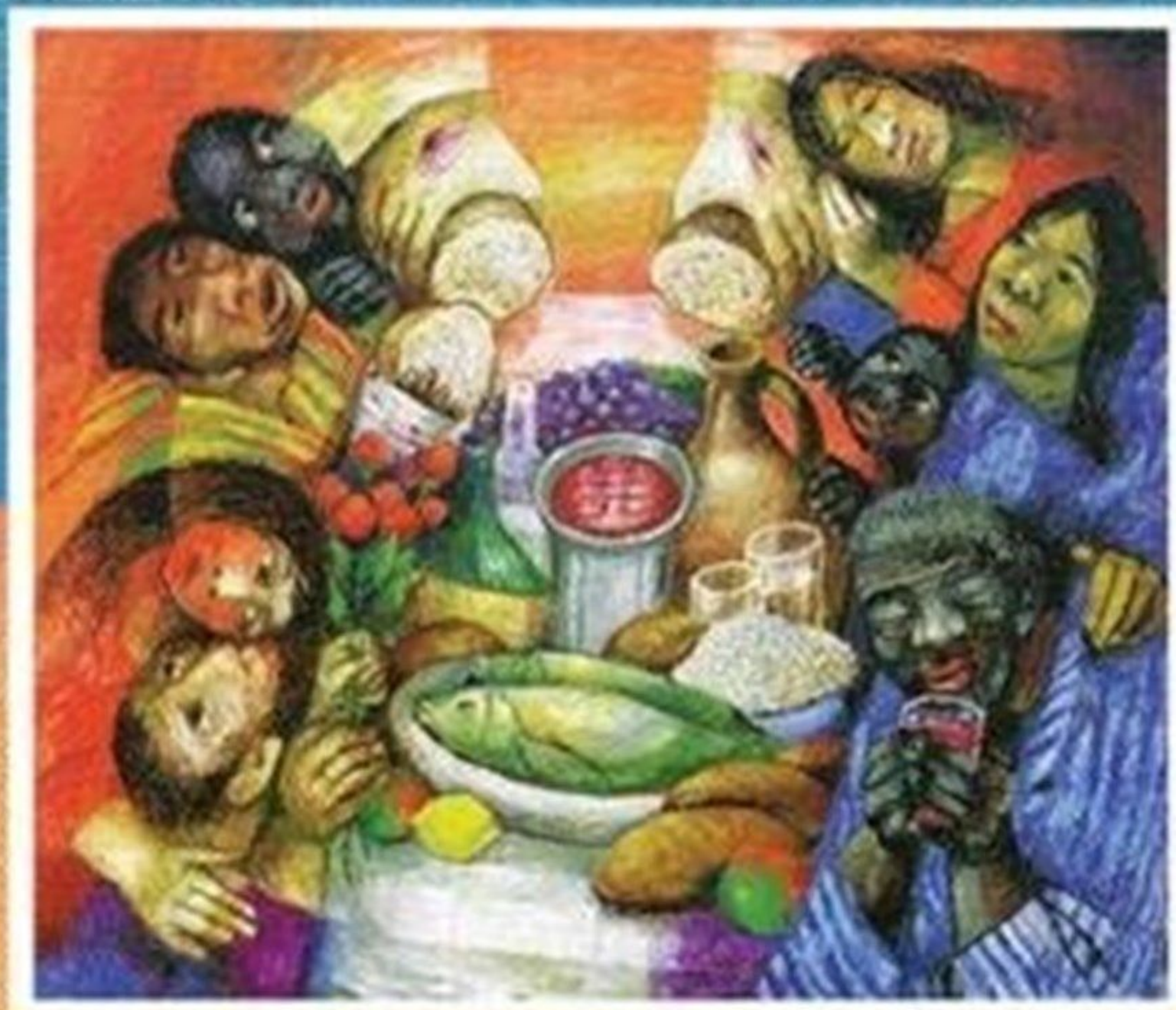
RENEWING THE BODY OF CHRIST
MARTYN PERCY



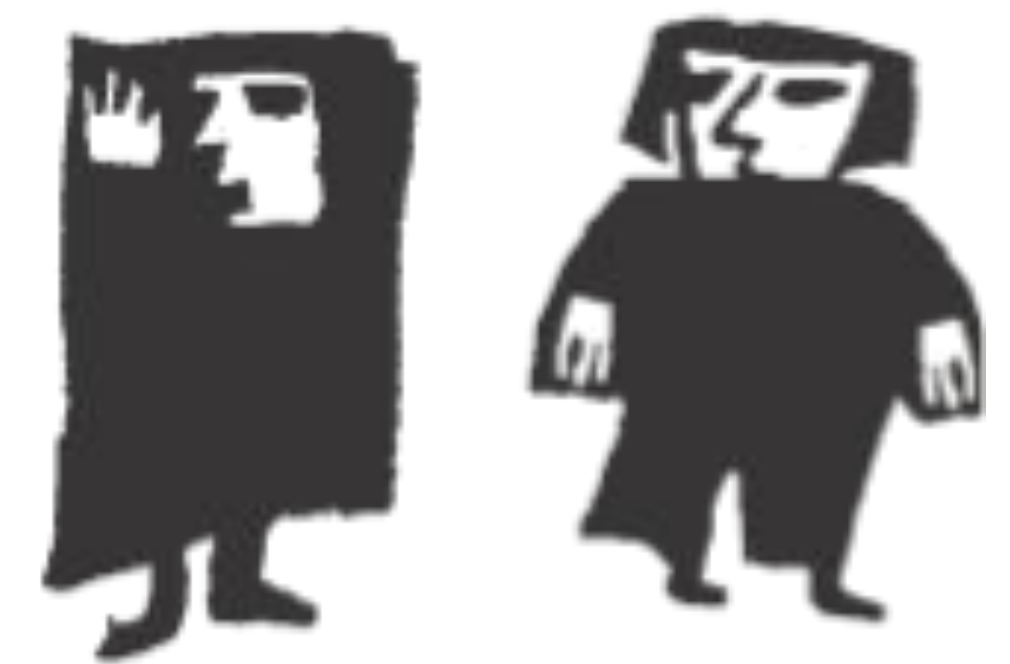
Jesus as
God's Verb



THE
HUMBLE
CHURCH
RENEWING THE BODY OF CHRIST
MARTYN PERCY



Church as
consequence
not cause.



Jesus as God's
Verb in the world.



Jesus as God's
Verb in the world.



Church as God's verb

Tell

Teach

Tend

Transform

Treasure

Culture as king

Introduction

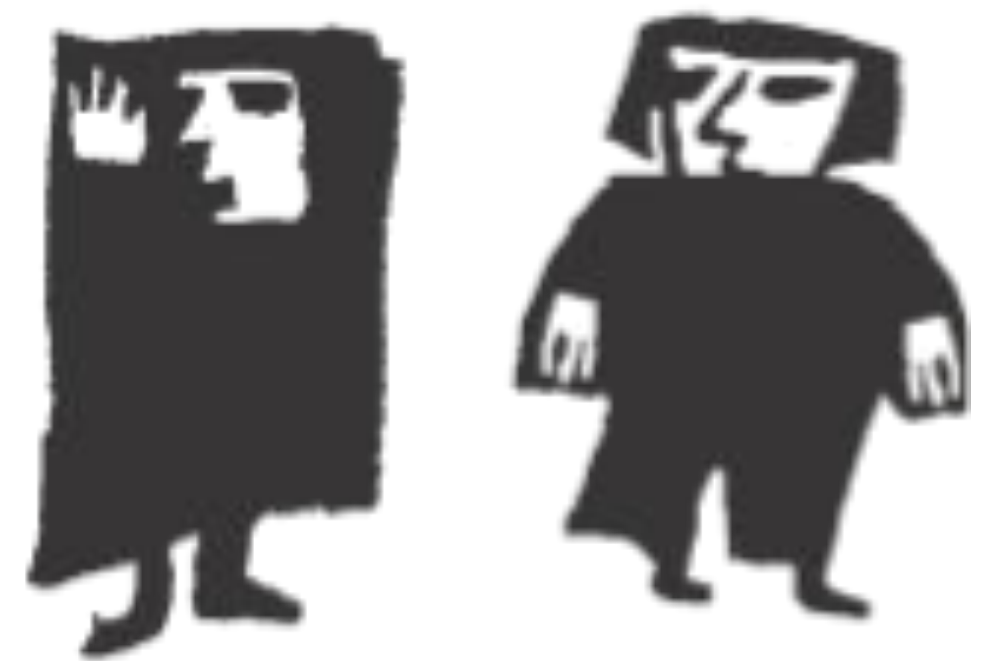
Going Deeper

This Church

OUR SCHOOLS

Educating for

Conclusion



The vocation of Anglican Schools is *education*
driven by a vision of *humanity*
shaped by the *image* of God,
made visible in *Jesus*
present in every *human being*.

INCARNATIONAL



patience

generosity

love



INCARNATIONAL



love
fairness
justice
wisdom
community
trust
kindness



INCARNATIONAL

love
fairness
justice
wisdom
community
trust
kindness



INCARNATIONAL

Intellectual
Pastoral
Faithful
Missional
Hospitable

**Education is at the heart
of our identity.**

CULTURE AS KING

Introduction

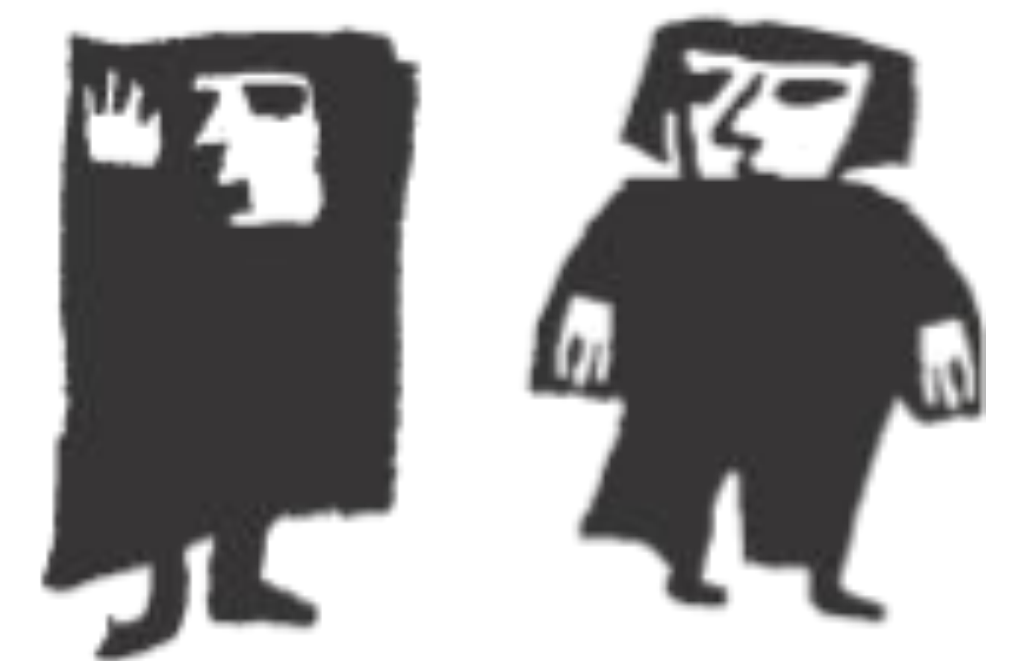
Going Deeper

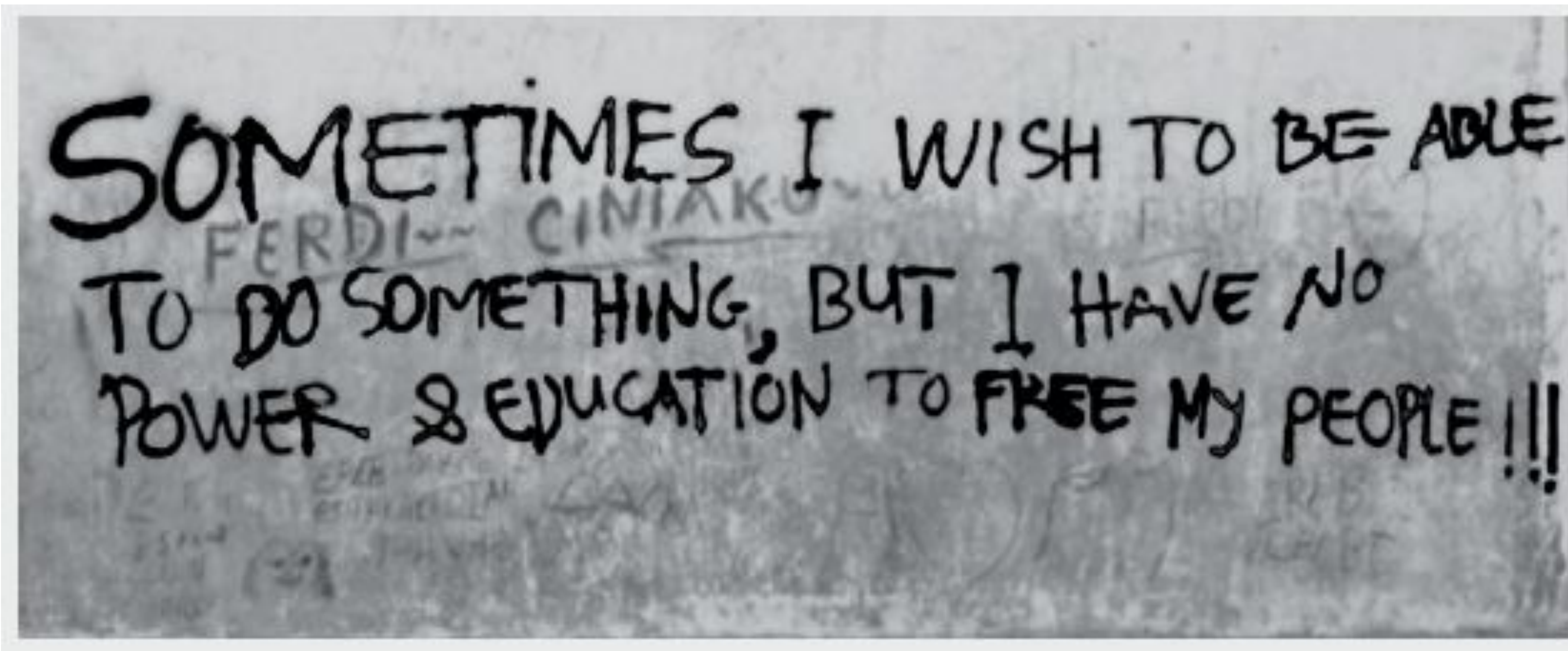
This Church

Our Schools

EDUCATING For

Conclusion





Courtesy: Kirsty Sword Gusmão, 2002

**What are we
educating for?**

Educating for

dignity

wisdom

hope

justice

CULTURE AS KING

Introduction

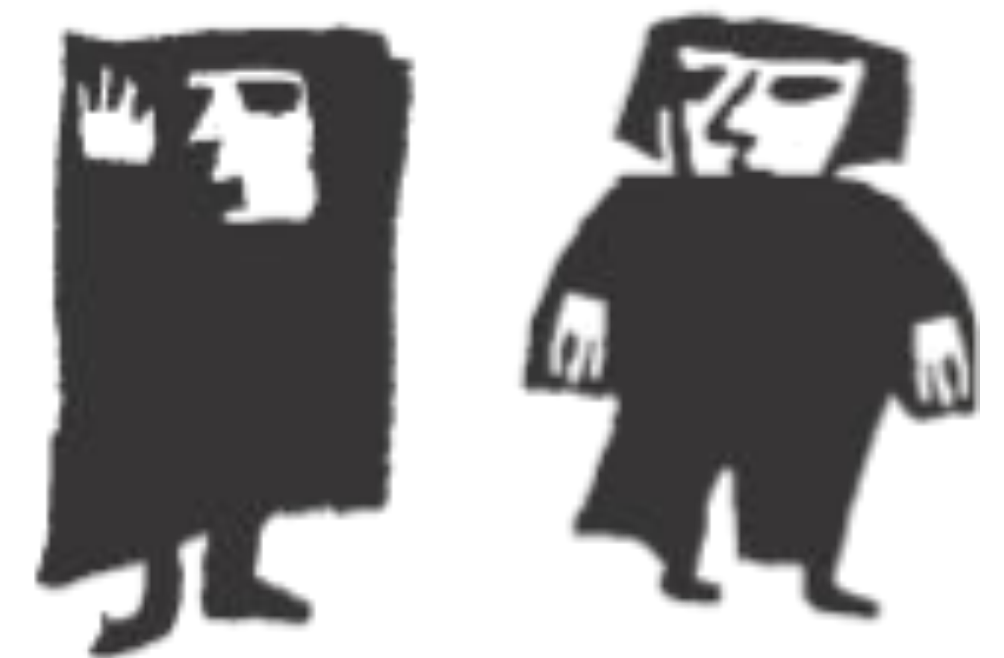
Going Deeper

This Church

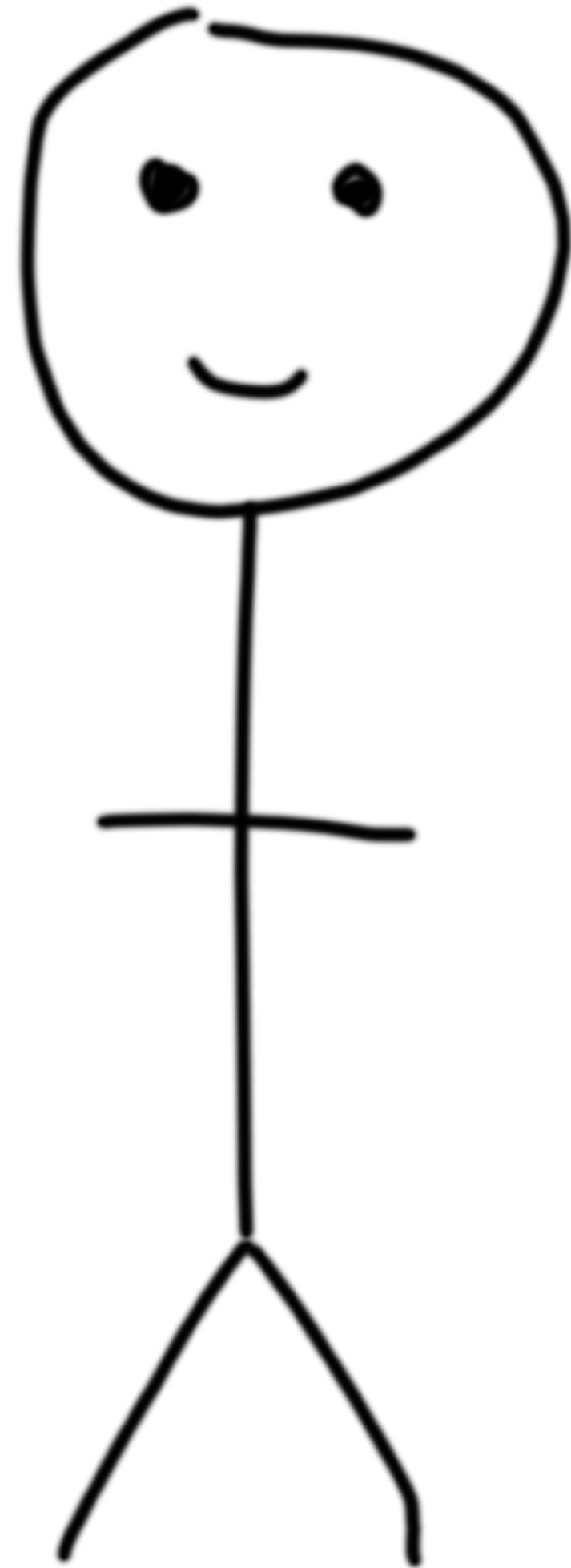
Our Schools

Educating for

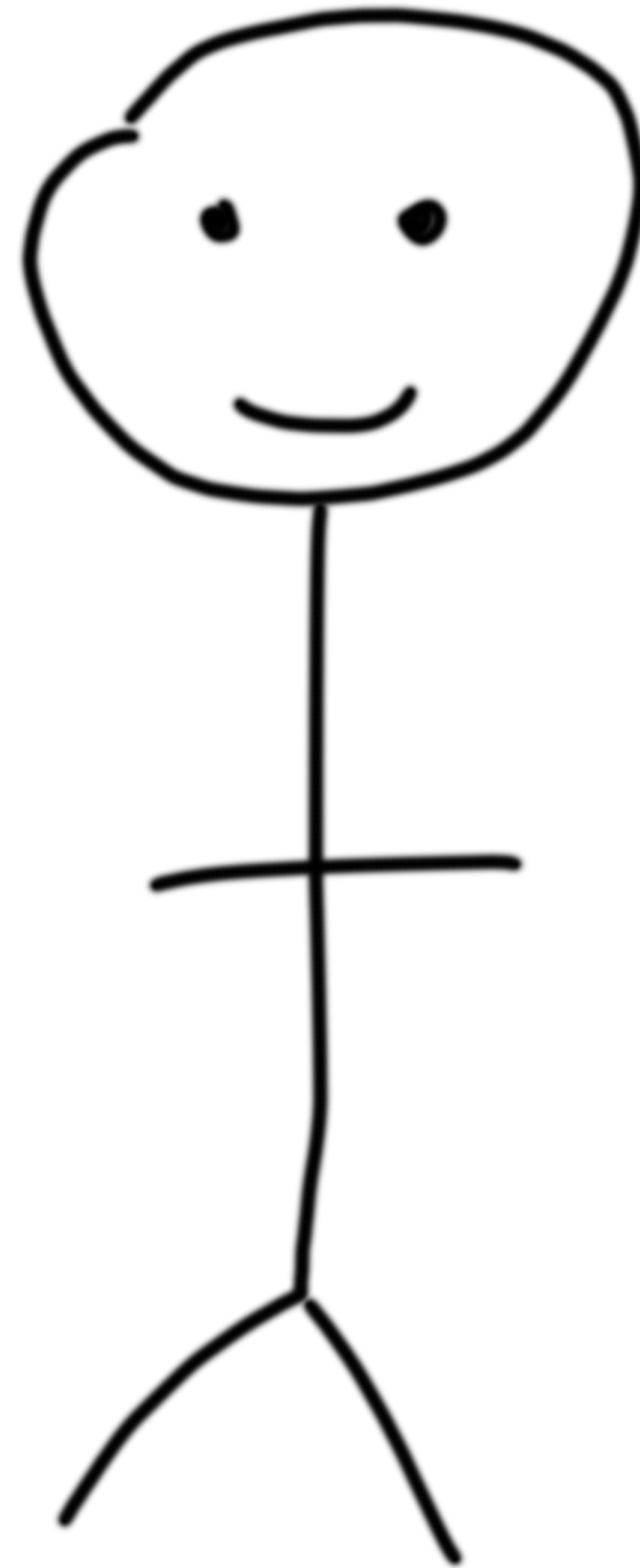
CONCLUSION



Sanjeev



James





ANGLICAN SCHOOLS

Excellence in education
bringing forth light and liberation
for the increase of all.